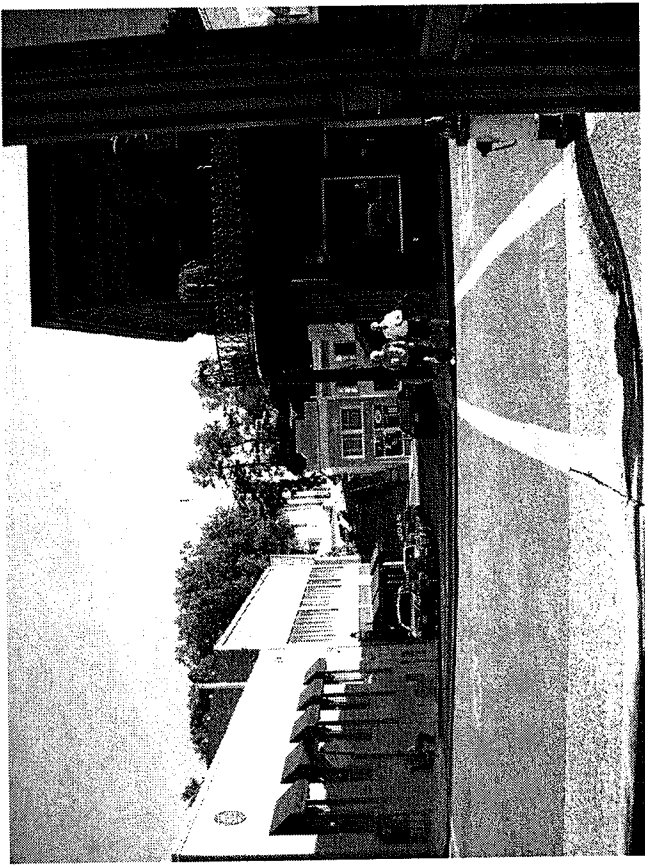
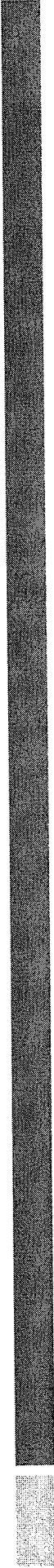


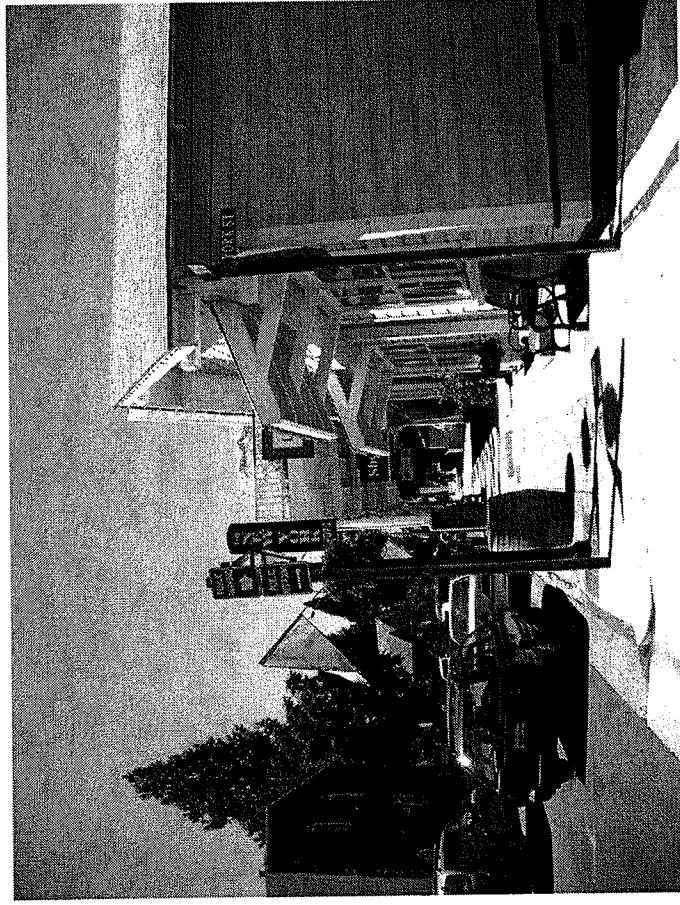
4. Broad at Pine (Looking West up Broad)



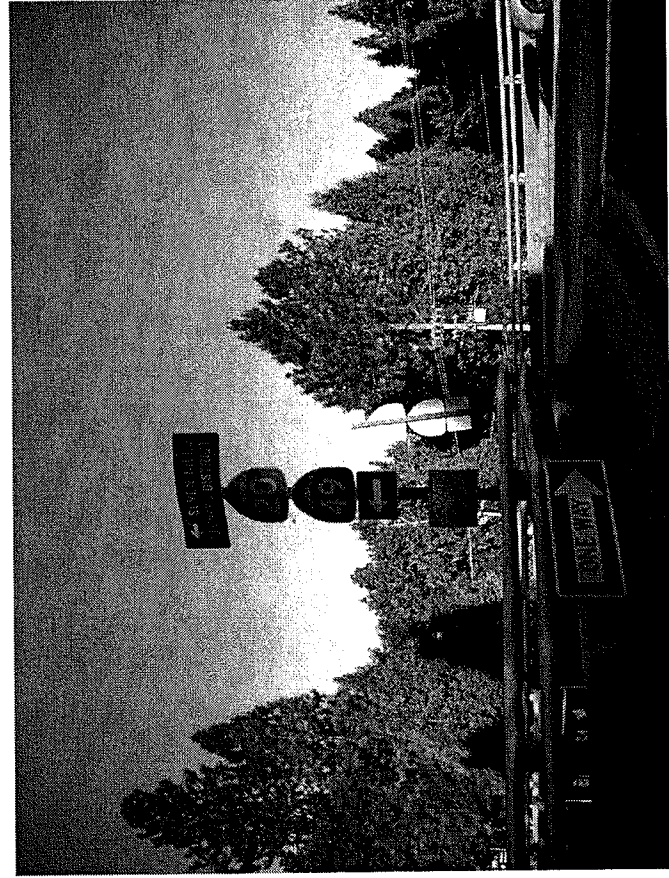
Staff recommends signage on corner (in front of Asylum Down) with some wording taken from Sign #8 (Hwys 20 and 49, parking, restrooms, Courthouse, with final wording to be determined. This sign would eliminate Sign #8. Staff recommends eliminating #9 (coming down Broad due to excessive signage)

5. Broad at York

- Eliminated because of directional signage



6. Fwy Offramp at Sacramento



Staff input: Good location for new sign indicating Historic Business District and 7 Hills Business District