



# City of Nevada City

---

TO: Planning Commission

FROM: Cindy Siegfried

DATE: November 7, 2011

RE: **Status update of Directional Signage**

The Planning Commission, in September of 2011, reviewed staff's recommendations to provide a list of the "top 10" signs that could be created by the City's public work staff for directional signage throughout the downtown and the Seven Hills areas.

The following locations were designated for the placement of directional signage to the downtown and the 7-Hills area:

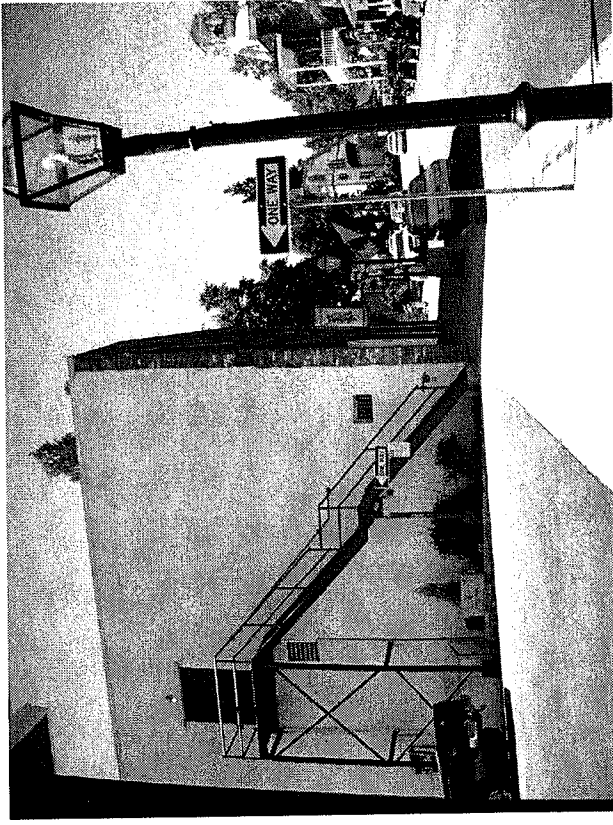
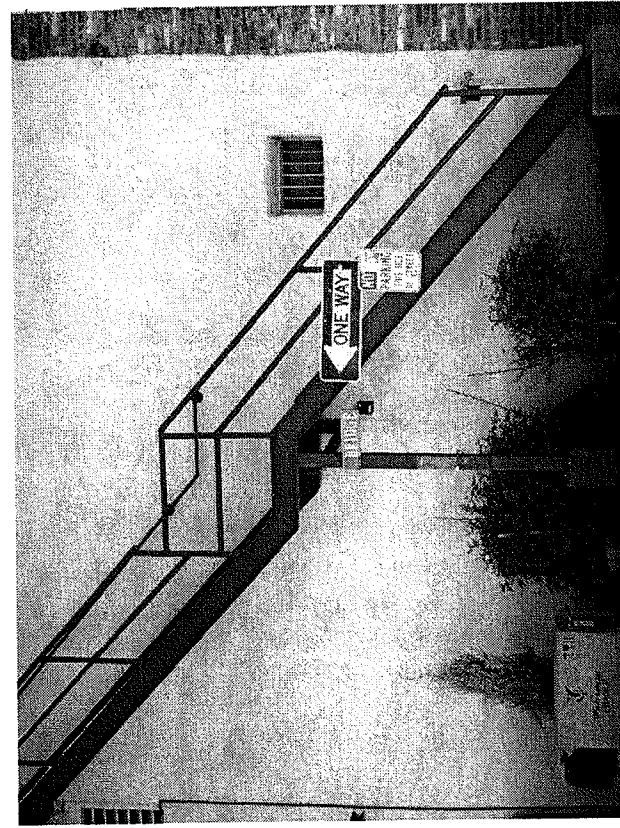
1. Corner of Nevada Theater at Bridge Street and Broad Street. The sign would point towards Spring Street.
2. Broad and York Streets – one on the Laloo business and one on the Spirit House building (with property owner's permission); sign pointing towards Commercial Street
3. Broad and South Pine Streets, on back of existing stop sign rather than on building. Sign would point towards Spring Street to indicate shops and City parking lot.
4. Commercial and North Pine Streets, on existing signage, indicating parking and shops.
5. Spring and South Pine Streets – installation of new pole sign with new "Spring Street" sign and indicating parking and shops.
6. Fwy Offramp at Broad Street indicating parking, tourist info and Pioneer Park.
7. Eliminate sign at Broad at Union (stating Tourist Info) and place new sign at Calanan
8. New sign at Calanan Park indicating visitor center, restrooms, Courthouse and parking.
9. Fwy offramp at Sacramento Street indicating Historic Business and 7-Hills Business District

Director of Public Works Verne Taylor will begin construction of the signs and installation over the winter. The signs will match the existing City signs which are brown wood with white lettering.

Attached are photographs indicating the locations of the signs.

# Broad & Bridge Streets

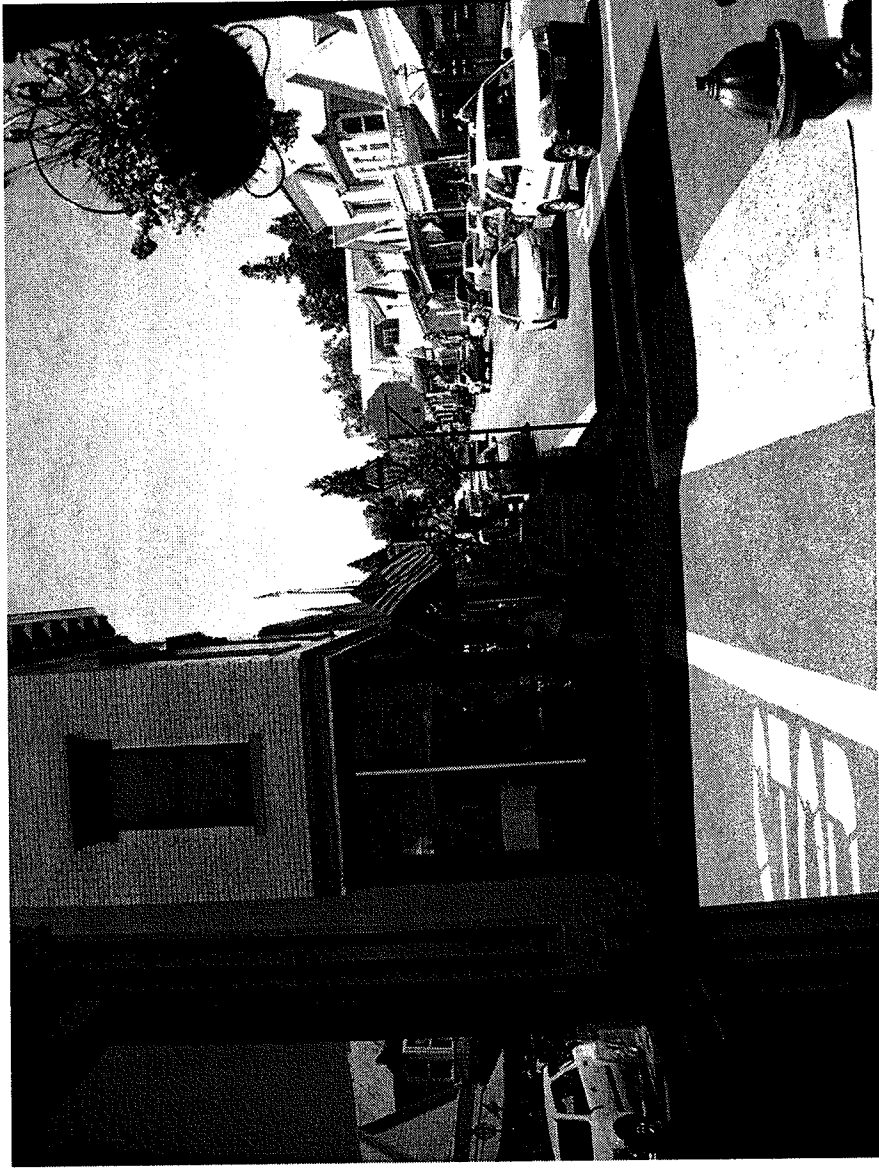
On street sign not building



↓ SPRING ST

# Broad and So. Pine Streets

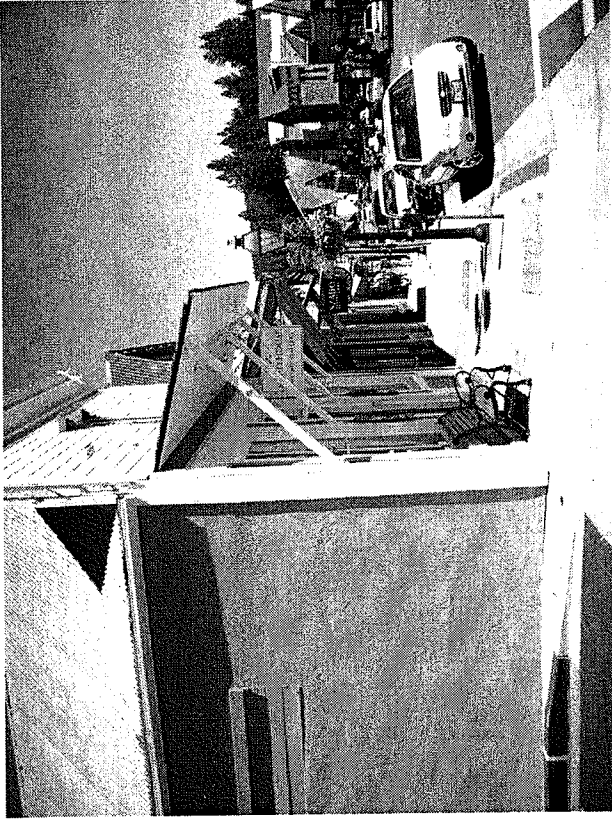
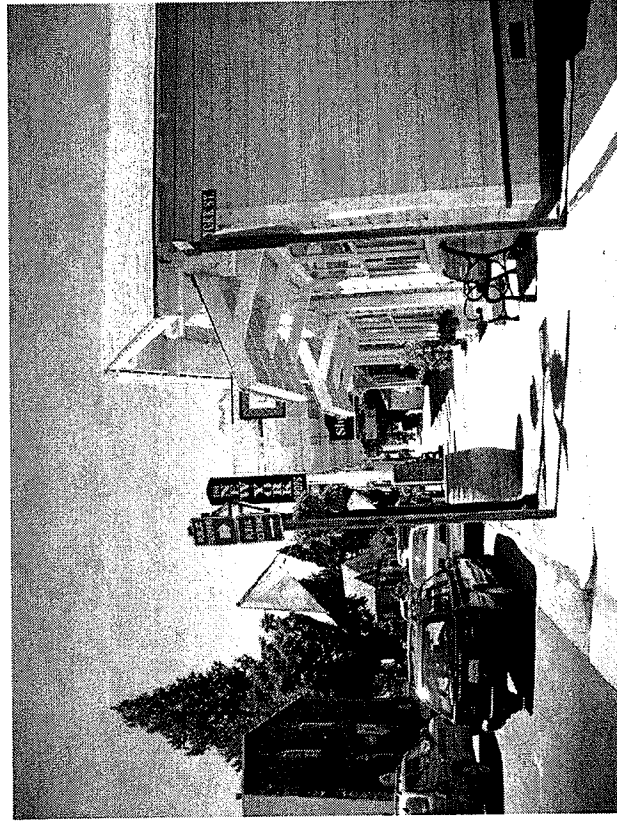
- Can be located on Stop Sign, rather than on building.
- Sign would point towards Spring Street to indicate shops and City parking lot



Spring Street  
Parking

# Broad and York Streets

One on Laloo and one on Spirithouse

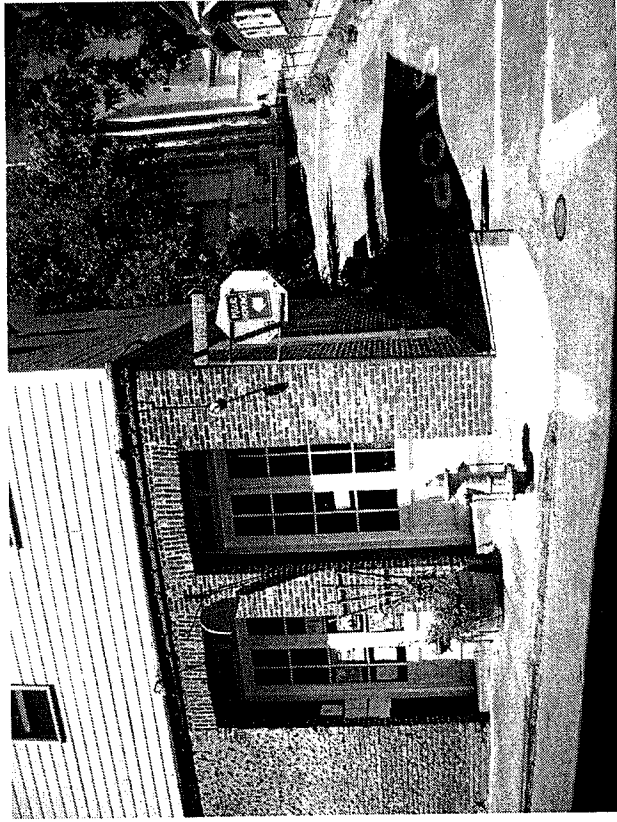


↑ Commercial Street

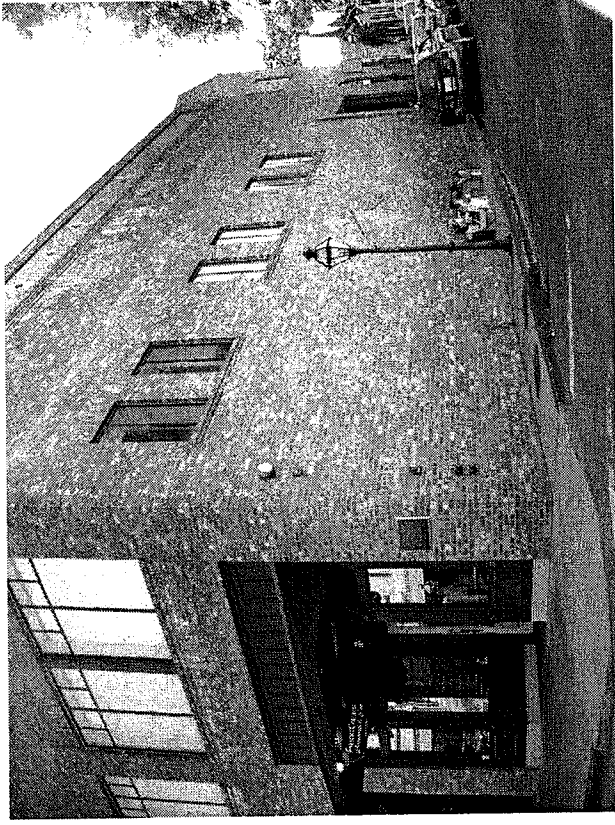
# Commercial and No. Pine Streets

## Not on building but on signage

---



↓  
Parking  
Shops



Not preferred due to  
Historic facade

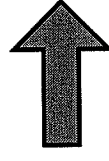
# Spring and South Pine Streets

---

- New pole sign
- New “Spring Street” sign to match existing City street signs (DPW)
- Would indicate City Parking and shops

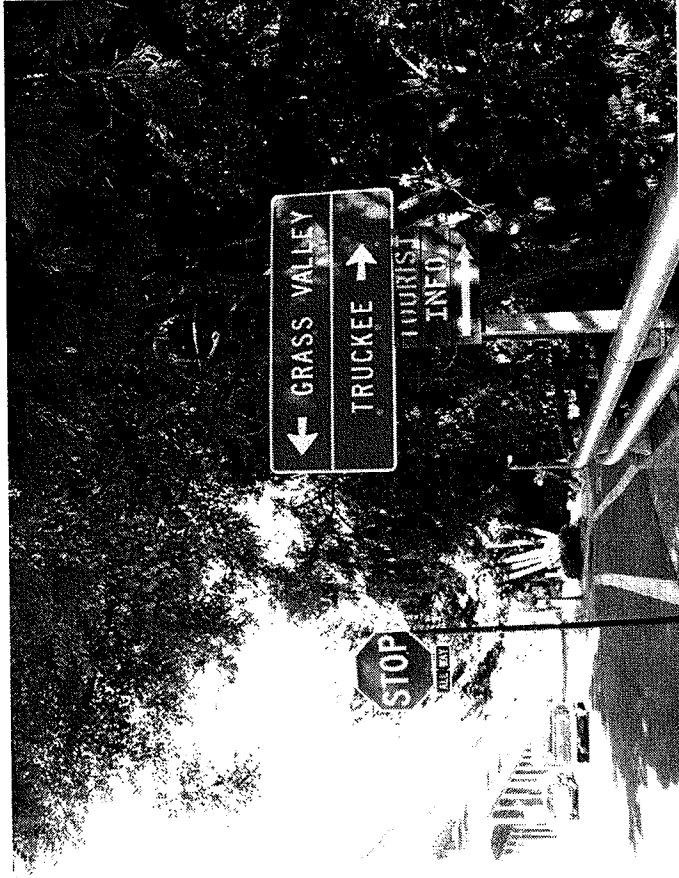
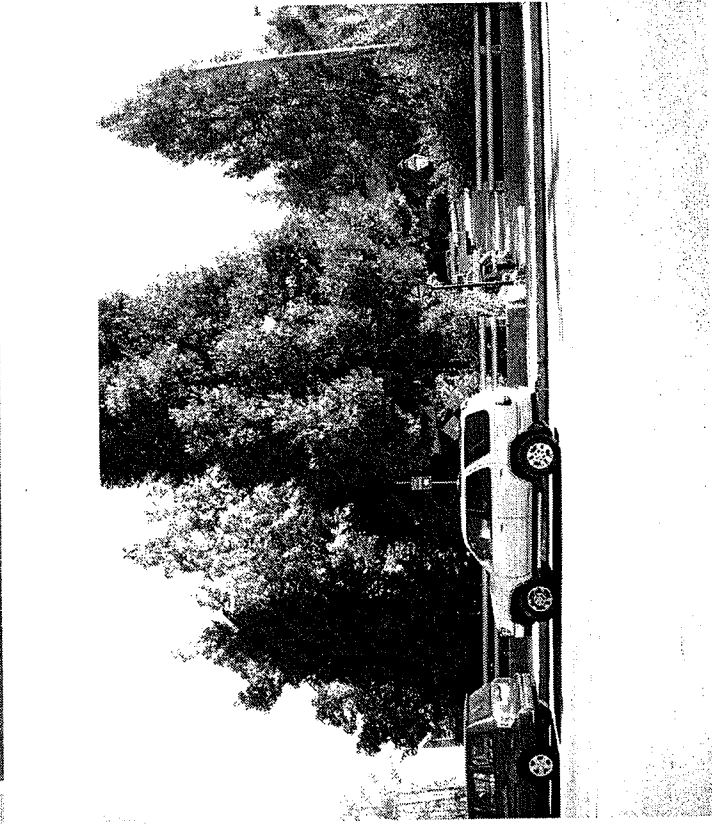
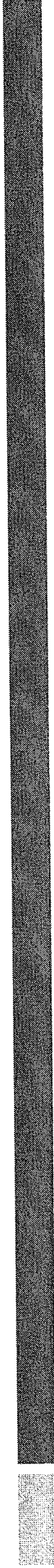


SPRING STREET  
PARKING  
SHOPS



# Review of TOP 10 Sign Locations

1. Fwy Offramp @ Broad St.
2. Broad at Union



Staff input: Add new #1 sign indicating Parking,  
Tourist Info and Pioneer Park

Sign #2 is eliminated and new sign located at Calanan

## 2. Broad At Union

## 3. Union

- Combine Signs #2 and #3 to be located in Calanan Park with wording indicating Visitor Center and Restrooms, Courthouse and Parking

