

Appendix C: Historical Maps of Pioneer Park

1934 – Proposed Park

1948 – Creek redirected and the lower field constructed

1968 – Addition to the park

1974 – Updated park map

1974 – Proposed park changes, funded by Looser Estate

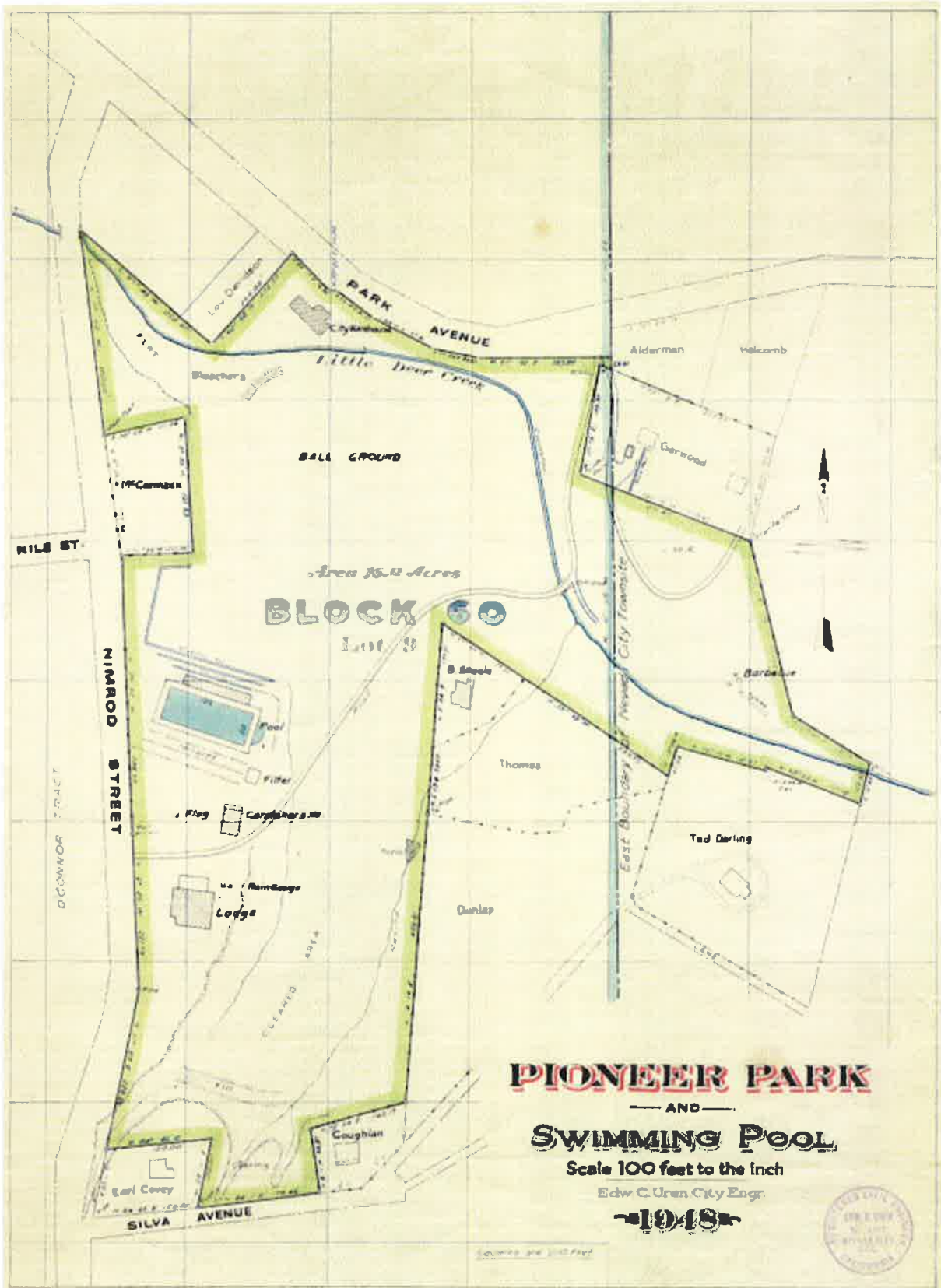
1984 – Proposed changes to the park (The changes proposed on this map were planned as an application to the California Parks & Recreation Facilities Act of 1984. The application was not awarded funding; therefore the changes were not made.)

1998 – Most updated map

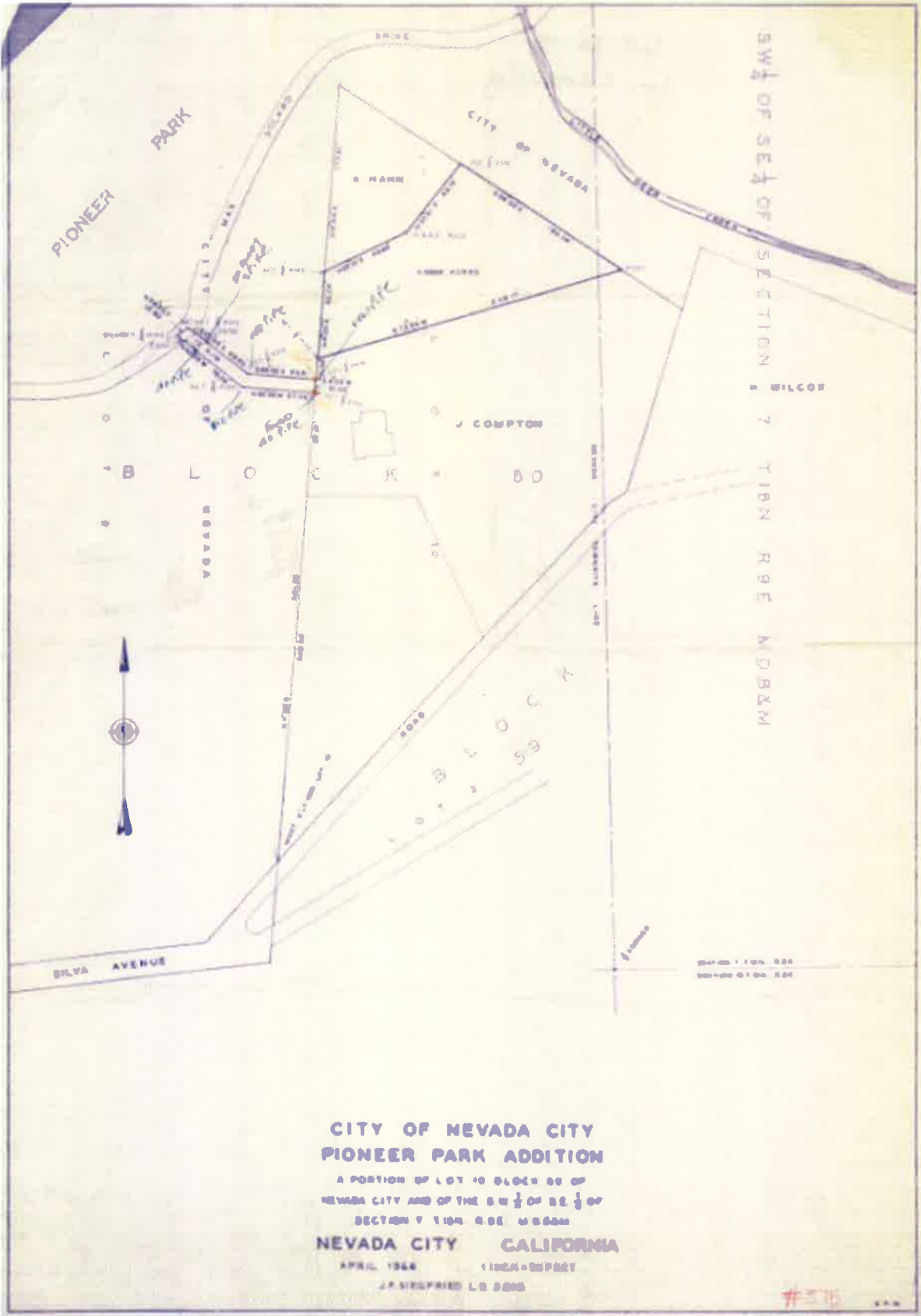
1934: Proposed Park Map



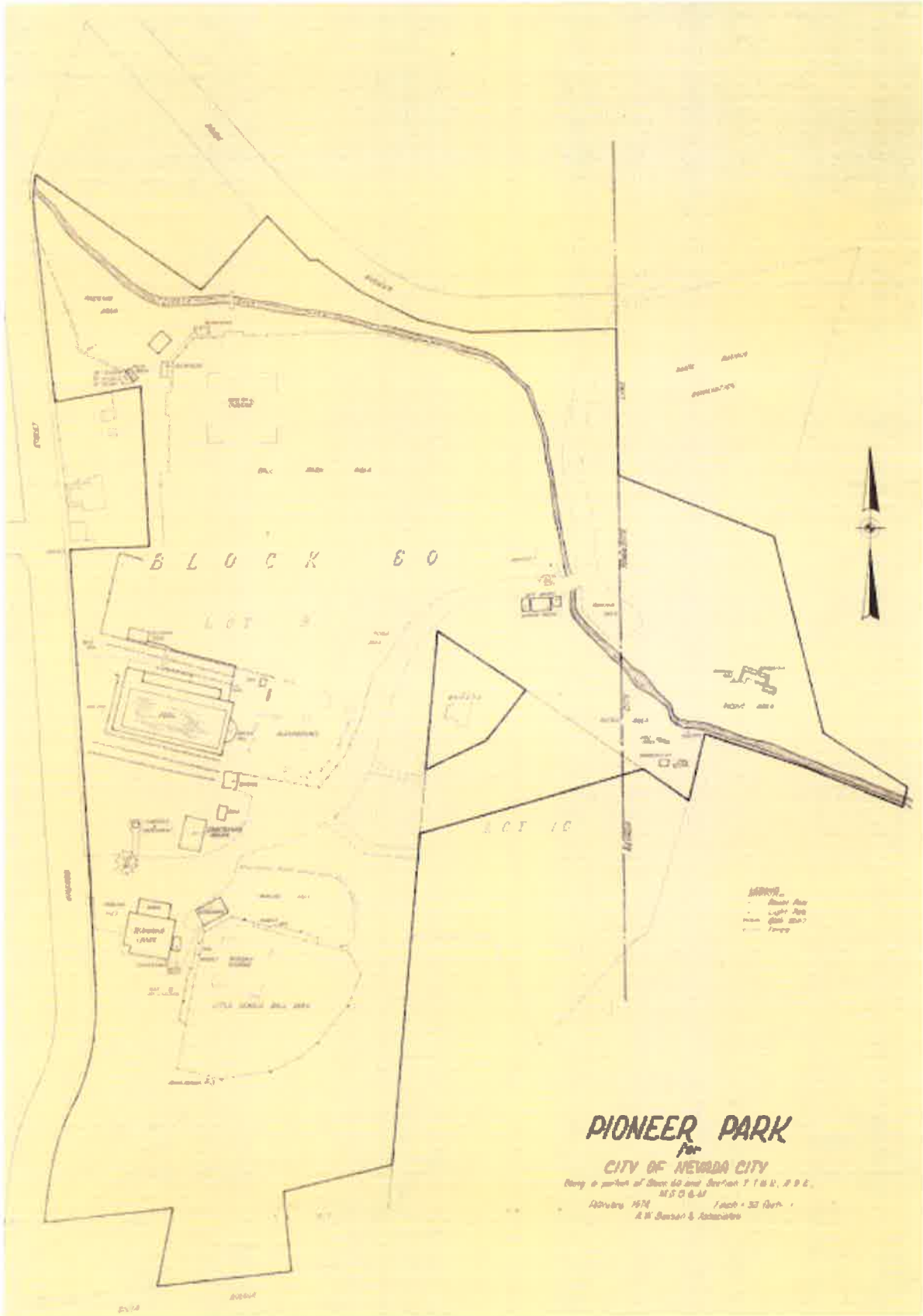
1948: Creek Re-directed & Lower Field Constructed



1968: Addition to the Park



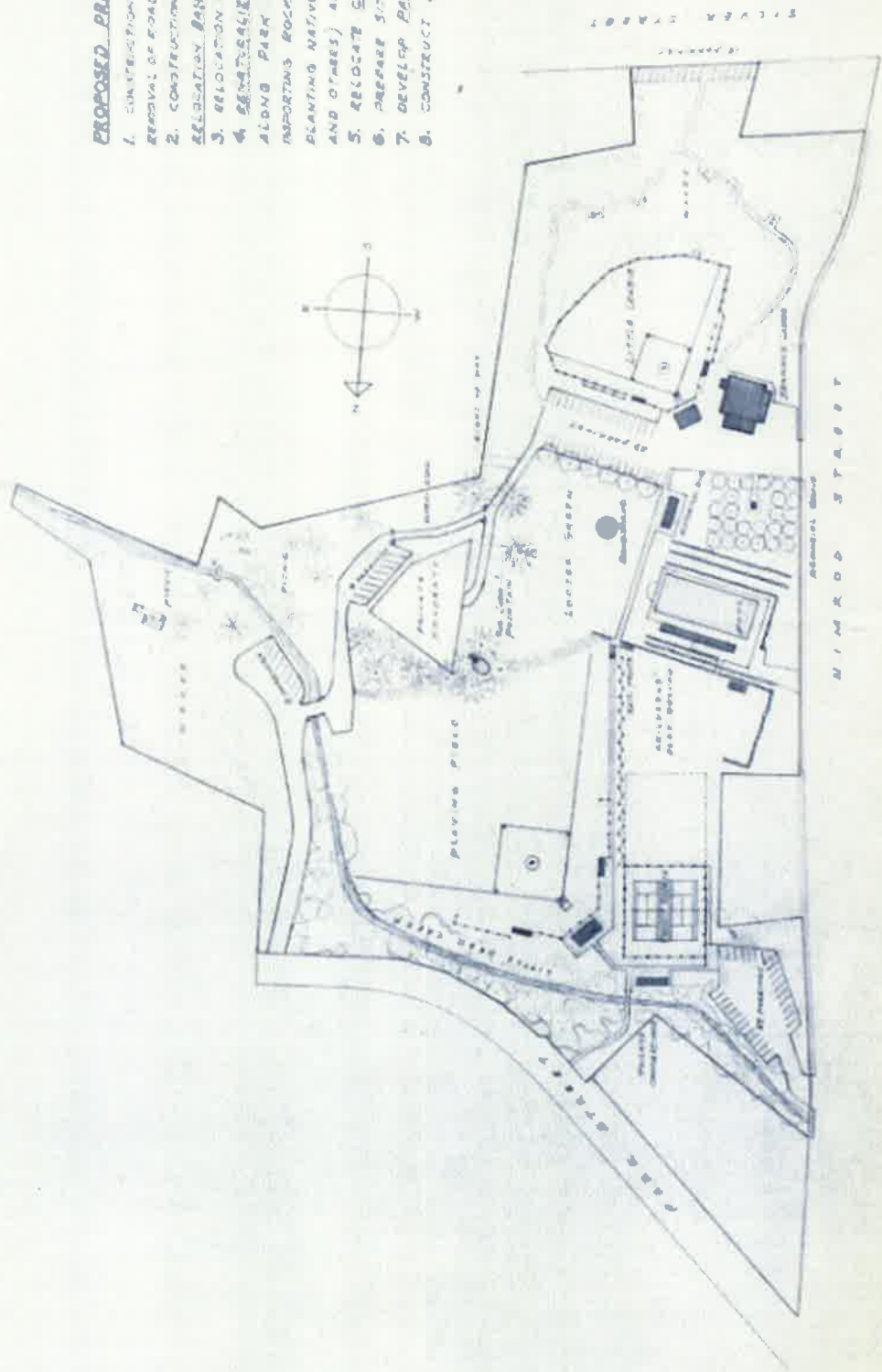
1974: Update Park Map



1974: Proposed Park Enhancements, funded by Looser Estate

PROPOSED PRIORITY OF PROJECTS.

1. CONSTRUCTION OF LAWN & FORMAL NEEDLING
REMOVAL OF ROAD THROUGH PARK
2. CONSTRUCTION OF IMPROVED COURSE AND
RELOCATION BARNARD FIELD
3. RELOCATION OF CHELSEA PLAYGROUND
4. RECONSTRUCTION OF WILD BIRD CREEK
ALONG PARK STREET BY IMPROVING CHANNEL,
IMPORTING ROCKS AND SAND TO CREEK BED AND
PLANTING NATIVE TREES (DOGWOOD, ALDER CEDAR
AND OTHERS) ALONG BANKS
5. RELOCATE CASE THREES HOUSE
6. PREPARE SITE FOR HISTORICAL BUILDING
7. DEVELOP PARKING AREA
8. CONSTRUCT BANDSTAND



PLAN FOR PROGRESSIVE DEVELOPMENT
 PIONEER PARK, NEVADA CITY, CALIFORNIA
 SCALE: 1" = 20' FEET. JUNE 1974
 FRANCIS E. CLOYD, ARCHITECT

#376

1984: Proposed Changes to the Park



PIIONEER PARK
NEVADA CITY, CALIF

DATE: 1/1/84

1998 Map

